

Note: This document applies only to word processing in Assyrian on Windows platform.

Introduction

In 1993 Rabi Daniel Beth Binyamin created an Assyrian font system compatible with True Type Font standard. These fonts are currently being used widely by many on Arabic keyboard. In 2010, Rabi Daniel launched a new Unicode Font system for word processing in Assyrian on a unique Syriac keyboard (Daniel Benjamin Syriac keyboard). Mapping of this unique keyboard is included in this document.

The new font system conforms to the standard Unicode encoding scheme. This means that the user can replace this font with any other Unicode-based font without losing the content. For example, you can send e-mail using any e-mail software such as Outlook, or browser-based e-mail like Yahoo or Google using this font. If your e-mail recipient does not have this font, it will be replaced by the system font (Estrangelo) but your e-mail text will still be readable.

The new capability has also automated many manual keystrokes. There are three forms of “allap” depending on where the letter is used. The diacritics (zoweh) have different placements depending on the height of the character. There are two types of “taw-allap” depending whether “taw” is or is not attached to the letter before it. The logic associated with all these variables has been built into this capability. As a result, the user will keyboard the “allap”, diacritic (zowa), or “taw-allap” in the same manner regardless the above variables. The intelligence built into the setup will typeset the script the correct way. There are also a few added characters used in liturgical scripts. It should be noted that the keyboard mapping of the previous setup (Arabic) and new setup (Syriac) are different.

Those who wish to start word processing in Assyrian for the first time are encouraged to use the new setup. Do not use the previous setup. Those who have used the previous setup will find the new setup more efficient. If you have a document created in previous setup, it can only be edited using the previous setup.

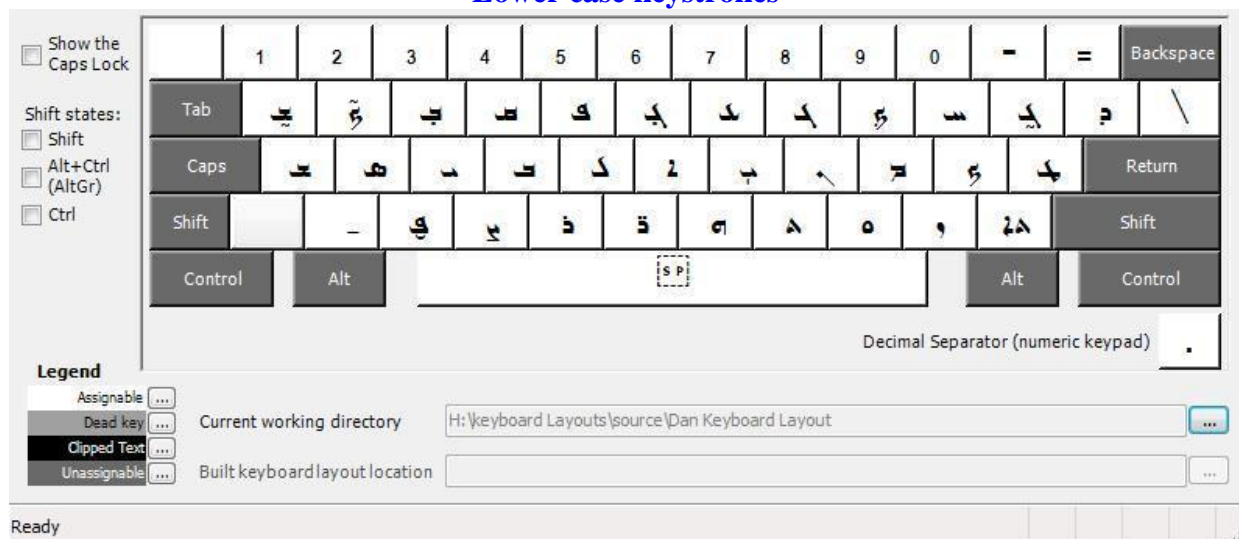
Rabi Daniel has acknowledged Mr. Sargon Hasso for his hard work in converting the previous fonts into Unicode standard. We all (users of personal computers to type in Assyrian) do acknowledge Rabi Daniel for his vision, dedication, and strive for prolonging the survival of our beloved mother language.

Marcel E. Josephson
San Jose, CA
May, 2011

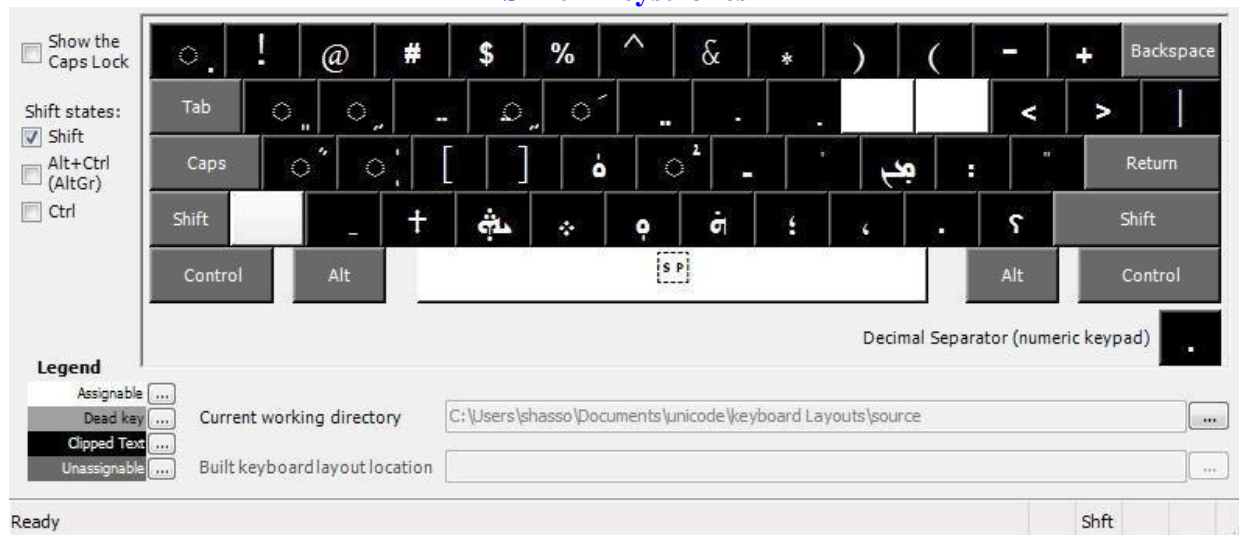
Following pages include:

- Keyboard mapping
- Setup procedure
- Fonts

Lower case keystrokes



Shift + keystrokes



Files you need:



Follow instructions on the next page.

1. Double click the **dblayout.zip** file (embedded above). Once prompted, open it. You will see a window like **Figure 1**. Select all files and click “Extract”. Once prompted, specify where you want these files to be extracted to. Once files are extracted **dblayout** folder at the specified place will automatically be created. The content of this folder will look like **Figure 2**.
2. From within this folder, double click the setup file. The wizard will install Daniel Benjamin Syriac Keyboard on your computer and you will see a window like **Figure 3**.
2. Use setup to remove or repair Daniel Benjamin Syriac Keyboard as needed. **Figure 4**.
3. Check the Language Bar to verify the installation is complete. If you have other Syriac keyboards installed (**Figure 5**), click the keyboard image next to SY on the Language Bar and ensure Daniel Benjamin Syriac Keyboard is checked. **Figure 6**.
4. Double click the **fonts.zip** file (embedded above) and copy its content to a temporary folder on your computer. If copying does not work, try extracting the content of this zipped file (the same way as step 1). Install fonts in Windows Fonts directory on your computer. The font names are **Assyrian**, **Assyrian Estrangelo**, and **Assyrian Italic** respectively.
5. To type in Assyrian, in a Microsoft Word session, set the Language to SY (on the Language Bar), select the desired font and font size, and set the Section Direction to Right-to-Left.
Those having difficulty enabling support for right-to left languages through Microsoft Office Language Settings, may refer to the instructions I wrote a few years ago (link blow) on the previous setup and follow step 1.

<http://www.aaasj.org/educom/WordProcessingInAssyrian.zip>

Figure 1

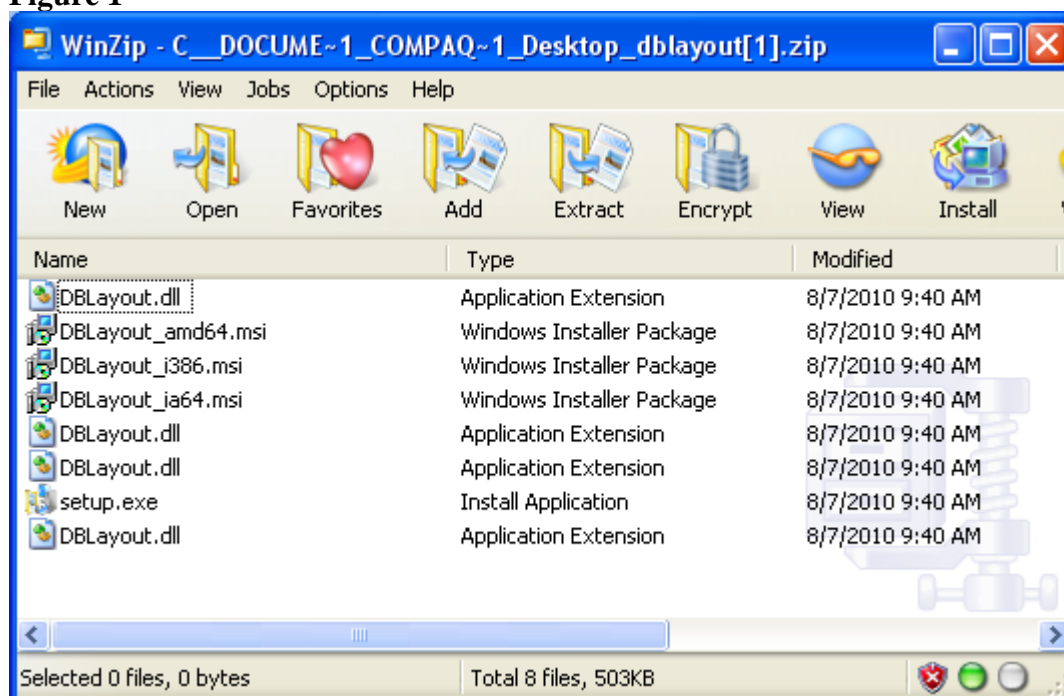


Figure 2

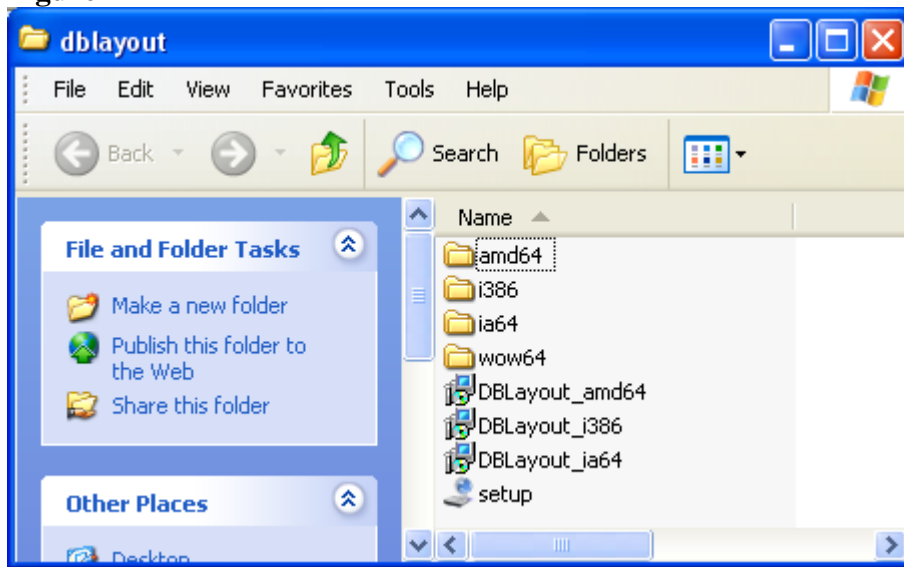


Figure 3

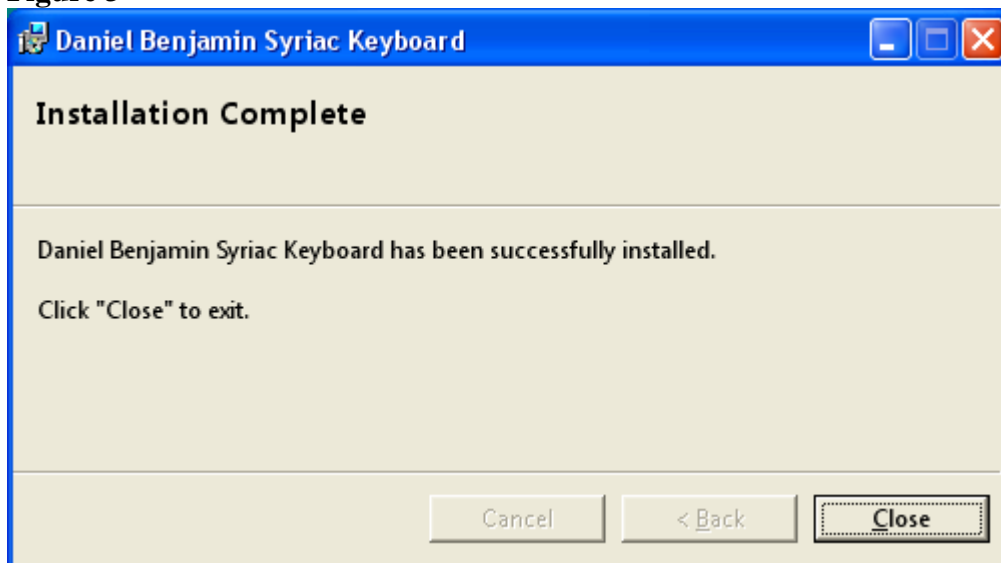


Figure 4



Figure 5

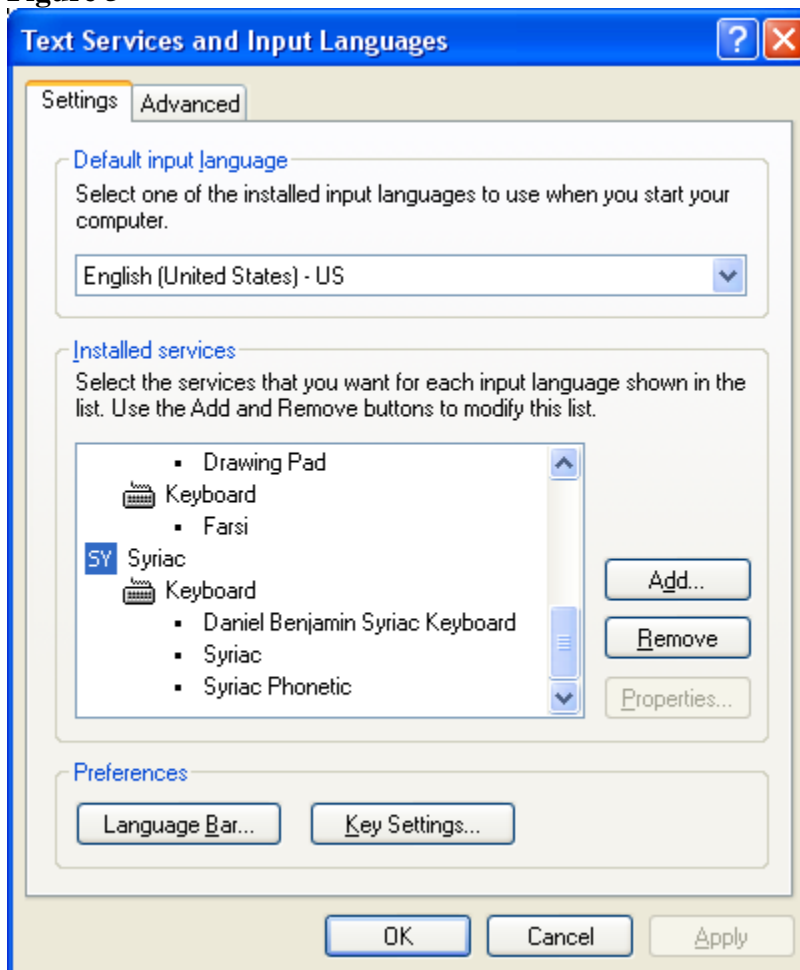


Figure 6

